



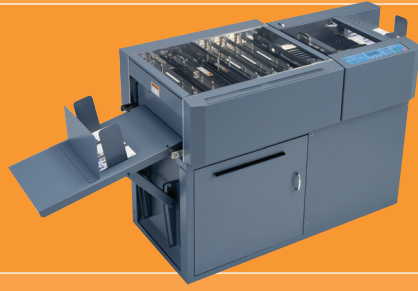
DC-645

production colour finisher

slit / cut / crease digital colour print in one pass
high speed and heavy duty
off-line / near-line solution
applications include:

business cards, folded business cards, greeting cards,
postcards, leaflets, cd/dvd inlays, brochures and point of sale materials





DC-645

production colour finisher

unique, innovative, and

The Duplo DC-645 digital print to produce business cards and much more.



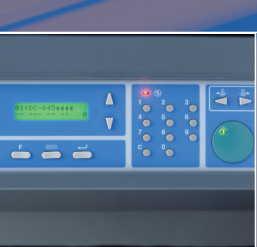
100mm deep capacity feeder tray, with air knife for reliable sheet separation. Duplo's world renowned feeding system presents the sheets gently and mark-free for processing, even when the pile contains mixed stock types and weights. Features ultra-sonic double sheet detection with sheet ejection for continuous operation.



Process modules include; 2 x rotary side trimmers, 4 x rotary slitting knives, 1 x cross knife and 1 x creasing rule with variable depth crease. The last tool module position is interchangeable for optional process units such as the business card cutter. All modules are quick and easy to remove for jam clearance and maintenance.



High capacity waste bin ensures longer running and easy emptying. All waste is stripped out during processing.



The touch panel display guides the operator through job set-up. 80 jobs can be stored and recalled quickly and easily, either manually or by barcode recognition from the printed sheet.



The exit tray module is fully adjustable with a range of separator plates to stack finished items for neat and tidy collection.

In an age where speed, versatility, flexibility, productivity and accuracy are crucial to a commercial printer's success, Duplo is proud to introduce its revolutionary, next-generation intelligent finishing machine - the DC-645. Specifically designed to match the output of high end production digital presses, the DC-645 production colour finisher can effortlessly produce regular and folded business cards, postcards, greeting cards, full bleed brochures, direct mailers and other bespoke print on demand materials on stocks of up to 350gsm.

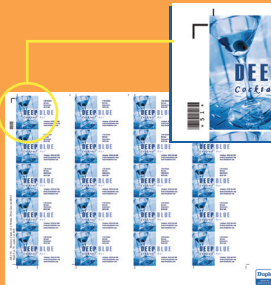
Most colour digital applications require the ability to trim to a full bleed product and/or crease, for crack free folding of digital print. The Duplo DC-645 is unique in combining slitting, trimming and creasing in one product, with all three functions operating in a single pass. So gone are the days of purchasing multiple machines requiring double the space, cost and man power!

Cost-effective and easy to operate, it finishes up to 26 sheets per minute and accommodates paper weights from 110 to 350gsm. The new DC-645 boasts an optional PC based user interface and JDF connectivity, making it simple to programme, and as the market continues to migrate towards new and more varied print jobs, the flexible design can incorporate additional tool modules such as business card cutters, perforators or scorers.

How it works

This vacuum-fed slit, cut, crease device sets up the tooling to a printed registration mark by using a built-in camera, compensating for the problem of image drift on digital presses. This ensures that the processed sheet is finished accurately, with the cuts and creases in precisely the right place every time.

An air knife reduces the problem of static by lifting and separating every sheet individually, before using Duplo's world renowned vacuum feeding system to present the sheets gently and mark-free for processing.



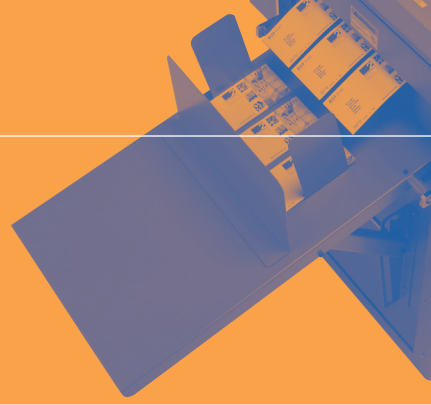
It can store up to 80 jobs (more with the optional PC based user interface) and by utilising barcode recognition technology, can identify the job automatically and be left to run at up to 26 sheets/min without supervision, even when several different jobs, stocks and weights are stacked in the feeding tray.



an innovative solution for finishing digital print

multi-function

545 production colour finisher automatically cuts, slits and creases
produce greetings cards, postcards, CD & DVD covers, business
more - quickly, accurately and profitably



Versatility

- Able to handle a wide range of media
- Maximum fifteen cuts and ten creases on one document
- Six slitting wheels for general print finishing
- Optional modules to suit specific customer applications

Accuracy

- High accuracy, +/- 0.2mm of the slit / cut / crease tools
- High accuracy for business card cutter
- Automatic paper shrink compensation
- Belt suction feeder and air knife for sheet separation
- Registration mark reading for image shift compensation

Productivity

- Maximum speed 26 sheets per minute
(based on A4, 4 side trim and 1 crease)
- 100mm feed capacity
- Automatic rejection of error / double feed sheets to reject tray
- Gutter cuts removed to waste bin
- Adaptable stacking tray allowing a broad range of collecting possibilities

Flexibility

- Automatically adjustable crease depth over 3 steps
- Adjustable speed control for varying stock weight and surface finish
- Operator replaceable modules allowing application specific finishing functions to be added to the machine
- Instant recall from a memory of 80 stored jobs

Ease of operation

- Job programming through text display
- Job recognition through barcode job number
- Automatic set-up of virtually all components
- Computer connection Wizard software allowing intuitive programming and easy adjustment of the machine
- Jobs stored, reviewed and edited via PC or Mac

Optional Extras

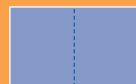
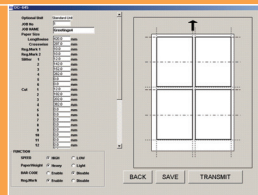
Business Card Module

Quick and easy to change module for optimal production of business cards and folded business cards.



PC User Interface and Programming Wizard

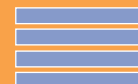
Intuitive programming, with full WYSIWYG graphical user interface for ease of set up on new jobs and fine adjustment of the machine. Can be programmed remotely through a network and features JDF connectivity.



Crease



Cross knife trim



Slit



Side trim



Feed

applications include:

business cards, folded business cards, greeting cards,
postcards, leaflets, cd/dvd inlays, brochures and point of sale materials

DuploTM

DC-645 production colour finisher specifications

Input Paper Size

Minimum	210 mm wide x 210 mm long
Maximum	370 mm wide x 650 mm long

Input Paper Weight

Minimum	Nominally 110gsm Note : lighter weights possible subject to paper curl
Maximum	Nominally 350gsm Note : heavier weights possible subject to crease pressure required

Finished Paper Size

Minimum	Business card size 48mm wide x 85mm long (85mm is in feed direction)
---------	--

Side Trimmers

Number	2 x rotary side trimmers
Side Trim Accuracy	Programmable 0.1mm steps, minimum 3mm +/- 0.2 mm maximum over width of 370 mm

Slitters

Number	4 x rotary slitting knives
Slitter Accuracy	Programmable 0.1mm steps
Tolerance	+/- 0.2 mm maximum over width of 370 mm

Cross Knife Trimmer

Number	1 x cross knife
Maximum Programmable	15 cuts
Lead Edge Trim	Recommended minimum 3mm
Trail Edge Trim	Recommended minimum 5mm
Accuracy	Programmable to 0.1 mm steps
Tolerance	+/- 0.2 mm maximum over length of 650 mm

Creaser

Number	1 x creasing rule across (width) paper direction
Maximum Programmable	10 creases, minimum distance to first crease 85mm
Accuracy	Programmable to 0.1 mm steps
Tolerance	+/- 0.2 mm maximum over length of 650 mm

Feeder

Capacity	100 mm
Type	Air knife separation / Top feed / Belt suction
Speed	Maximum 1560 sheets per hour A4 and A3, short edge feed, 1 crease plus 4 side trim @ 26/minute SRA3, 8 postcards with gutters @ 12/minute

Power Supply

Voltage	Single phase 230V AC
Current	1.6 A

Machine Dimensions (mm)

Length	2240 mm
Width	750 mm
Height	1115 mm
Weight	360 Kg



Duplo International Ltd, Sandown Industrial Park,
Mill Road, Esher, Surrey, KT10 8BL, England

t +44 (0)1372 468131

f +44 (0)1372 460252

email: enquiries@duplointernational.com

website: www.duplointernational.com

Ref: E-DC645BR

Production rates are based on optimal operating conditions and may vary depending on stock and environmental conditions. As part of our continuous product improvement program, specifications are subject to change without notice.

Duplo is a trade mark of the Duplo Corporation
Duplo has a policy of continuous improvement
and reserves the right to amend the above
specifications without prior notice

