

Create a **VISUAL IMPACT.**



Increase the **VALUE OF YOUR PRINT PRODUCTS.**



Add an **EYE CATCHING LAYER** of texture and depth that they can **TOUCH AND FEEL.**

Duplo USA Corporation

3050 S. Daimler Street, Santa Ana, CA 92705

tel 800.255.1933 fax 949.851.3054 www.duplousa.com

All rights reserved. No part of this document may be reproduced without permission of Duplo USA Corporation.

0217A0

Duplo
from print to documents

DDC-810 Digital Spot UV Coater

Raised Spot UV Embellishment for Short Run Production



Taking Print to a New Dimension

FEATURES

- ✓ **Small footprint fits into limited spaces**
- ✓ **User-friendly PC Controller software**
- ✓ **Easy pre-press preparation and operation**
- ✓ **Air suction feed and sheet alignment system**
- ✓ **Loading capacity of 5.9" (150 mm)**
- ✓ **CCD Camera (registration mark detection) for accurate image registration**
- ✓ **600 x 600 dpi inkjet heads**
- ✓ **7 stage adjustable UV varnish thickness (20 – 80 microns) via PC Controller**
- ✓ **Fine adjustments of print image position via PC Controller**
- ✓ **Easy to load UV varnish cartridge (3 liter bag)**

Add value to your print products with an eye catching layer of spot UV embellishment that they can touch and feel! Imagine the possibilities with the visually impactful images you can create and the impression you can make that will make them say WOW!

Introducing the Duplo DDC-810 Digital Spot UV Coater. A compact and affordable solution, the DDC-810 offers printers the capability to enhance their images with a layer of texture and depth. Utilizing ink jet technology together with an ultra violet lamp to instantly cure the UV varnish, the DDC-810 applies a gloss finish to defined areas of the substrate giving them more impact and appeal. A CCD camera - which automatically corrects for shrinkage, stretch and skew – along with unique registration marks ensures the accurate and precise alignment of the spot UV image onto the printed document.

Equipped with Duplo's widely renowned air suction feed system, the DDC-810 can process up to 21ppm (ledger size) and 36ppm (letter size). The unit features a dust roller, metal hydride lamp, ultrasonic double feed detection, fully automated head cleaning purge, and detection sensors for miss-feeds, ink attached, ink near empty, ink disposal tank full, cover open/closed, jam before and after UV lamp, and feed empty. Extremely easy to set up and operate, the DDC-810 is ideal for short to medium digital and offset print jobs.

Add an element of touch and stimulate the senses with Duplo's DDC-810 Digital Spot UV Coater!

SPOT UV WORKFLOW



Create and print application on a digital or offset press



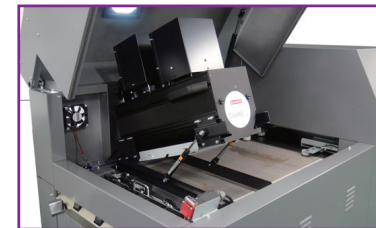
Create a separate B&W Tiff or PDF file to select where the gloss will be applied



Send files to the Duplo PC Controller software



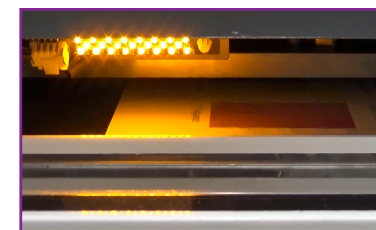
Produce high quality, raised spot UV applications



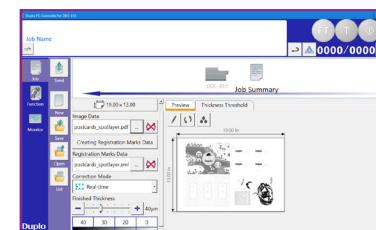
UV lamp instantly cures the varnish



Easy to load cartridge



CCD camera ensures the accurate alignment of the Spot UV layer



PC Controller software makes it easy to operate

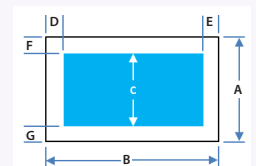
SPECIFICATIONS

Paper Size

A. Width: 11" - 14.33" (279 mm – 364 mm)/ (B3)
B. Length: 8.27" - 29.13" (210 mm – 740 mm)
Restriction: Width to Length Ratio (3:1, 2:1) when paper length is over 19.68" (500 mm)

Print/Non Print Area

C. Printable width: 13.03" (331 mm)
D -G. Minus (-) 10mm Maximum/
0.39" from lead/trail/left/right edge
(Non printable area)



Paper Type

- Art/ Coated Paper 157 – 450 gsm
- PET Laminated, no over the film edge from paper on the registration side, less than 0.4mm
- Paper Condition: Curl less than 2mm (R50) Wave less than 2.0 mm incl.

Image Data Format

PDF/TIFF

Paper Loading Capacity

5.9" (150 mm)

Print Accuracy

- +/- 0.1 mm both X & Y direction
- Maximum Amount of Correction (X & Y) +/- 2.0mm

Print Thickness

- 20um – 80um
- Accuracy +/- 10um (depending upon paper type)
- 7 Thickness settings

Estimated Processing Speed

- 21 ppm (ledger size)
- 36 ppm (letter size)

Average Volume Estimation

- 3 liter varnish can print over 3,500 sheets with 40um and 15% coverage rate

Power Requirements

- 208 -240V 50/60Hz 38A (+6%, -10%)
- 110V 60Hz 15A for PC

Dimensions (WxDxH)

138.46" x 32.28" x 55.11" (3,517 x 820 x 1,400 mm)

As part of our continuous product improvement program, specifications are subject to change without notice.