

PAPER FOLDING MACHINE CFM 500

OPERATIONAL MANUAL

1) Parameters

- folding speed 120 sheets/min.
- methods of folding standard letter, concertina, single
- sheet format A4, A5, A6
- basis weight 80 -120 g / m²
- input board capacity 200 sheets (80 g/m²)
- machine dimensions: working position - l = 295 mm,
w = 355 mm,
h = 365 mm
transport position - l = 295 mm
w = 355 mm
h = 280 mm
- machine weight 15 kg
- voltage / frequency 230 V / 50 Hz
- electric input 60 W
- electric current 300 mA
- fuse F 630 mA/250V

2) Machine description

WARNING:

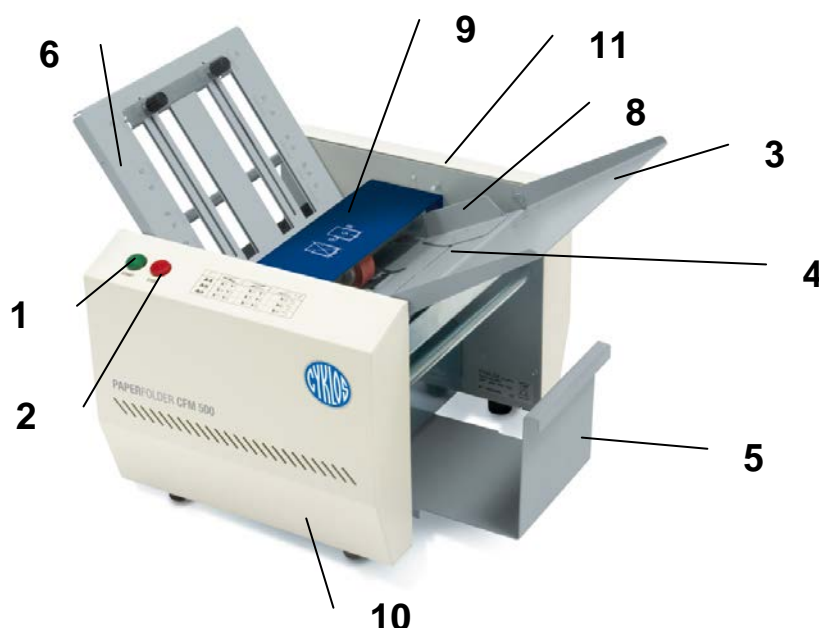
- a) The folder is designed only for folding paper specified in parameters.
- b) It is forbidden to fold foils, sheets and similar materials.
- c) The machine may be utilized only in a closed room (office, shop).
- d) It is forbidden to utilize the machine outdoors.
- e) It is forbidden to utilize the machine with damaged feeding cord.
- f) It is forbidden to utilize the machine, if unusual sounds are heard.

INSTALLATION AND OPERATING INSTRUCTIONS

- a) It is forbidden to operate the machine under a voltage different from the voltage specified on the type label.
- b) Prior to the machine utilization, definitely read all instructions.
- c) To reduce the risk of injury, an inspection shall be essential, if the product utilized in the vicinity of children.
- d) It is forbidden to insert fingers or hands to the product after the feeding cord connecting.
- e) If the machine blocked, it shall be first necessary to disconnect the machine from the mains supply, and then remove the cause of blocking.
- f) It is forbidden to replace faulty fuse by another type, or by a fuse with different power.

Marking of the main parts of the machine

- 1 – start button
- 2 – stop button
- 3 – tilting board
- 4 – infeed tray
- 5 – delivery drawer
- 6 – X stop
- 7 – Y stop (back side)
- 8 – T-squares
- 9 – stop rider
- 10 – front cover
- 11 – back cover



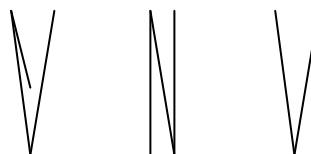
3) Working process

Tilt down the feeding board **4**, hold it in the lower position and feed paper on it, then push T-squares **8** towards the paper.

After pressing the „start button“ **1**, paper is automatically fed from the pile and folded into the waste box. It is necessary to remove paper from the waste box during operation to prevent its overfilling. It is advisable to let the machine finish a folding cycle. After the last sheet of paper is folded the machine turns off automatically.

4) Methods of folding and control of stops

Types of individual folds



Each type of paper folding requires precise setting of the stop rider **9** of the X stop **6** in an appropriate position. The position of riders of X and Y stops can be adjusted for various types of paper. 'Single' folding ($\frac{1}{2}$) requires that the Y stop is inserted in the machine in the opposite way.

5) Troubleshooting

Paper crumpling in the machine: First both stops must be removed from the machine and then the crumpled sheet must be removed in such a way that the rollers turn round spontaneously.

Defective fuse replacement: Disconnect the supply cable from the mains and after dismantling the cover, replace the fuse (F 630 mA/250V)

6) Dismantling of covers

Covers can be dismantled by a qualified person only and only after the machine has been disconnected from the mains supply.

7) Machine disposal

When the service life of the machine is over, the machine is disassembled and its parts are sorted as follows: metal, non-metal, plastic and rubber. These parts are then handed in at the respective collecting points for further recycling.