

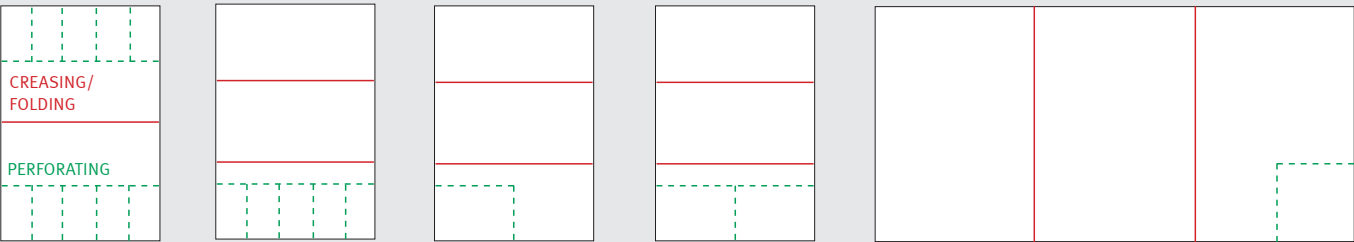
TOUCHLINE CP375 DUO

Technical Specifications Perforating & Creasing TOUCHLINE CP375 DUO

Feeder system	suction feeder	Working system	Multigraf Quick-Set
Feeder capacity	180 mm		interchangeable tools
Paper size minimum	105 x 148 mm	Reception tray height	120 mm
Paper size maximum	375 x 660 mm	Delivery belt	optional shingling delivery, L = 1'100 mm, P/N 482.112
	375 x 1'050 mm with table extension	Speed	depending on job, up to 6'000
Paper stocks perforating	80-300 gsm or max. 0.3 mm*	Dimension	1'800 x 600 x 1'200 mm
Paper stocks creasing	80-400 gsm or max. 0.4 mm*	Weight	158 kg
Control panel	touchscreen	Electrical connection	100-240 VAC, 50/60 Hz
Double sheet detection	ultrasonic		

*Paper stocks depending on material quality.

Sample Applications In One Operation



Standard Tools Cross Direction

	Perforating	Creasing
Tool detection	automatic	automatic
Pressure adjustment	3 depths for each style	3 depths for each style
Number of tools (standard)	1 perforating tool, 11 TPI	1 negative creasing tool
Optional perforating knife	17 TPI and 26 TPI	–
Additional tools	stop perforating tool, optional	positive creasing tool, optional
Number of operations	up to 20 per sheet	up to 20 per sheet
Minimum distance	3 mm	1 mm
Time perforating/creasing	yes, optional	–

Rotary Tools Feed Direction

Perforating	max. 4 heads simultaneously
Standard perforation	11 TPI (optional: 17 TPI / 26 TPI)
Minimum distance	30 mm, from line to line
Distance time perforation	min. 5 mm
Number of perforations	1-5 per sheet



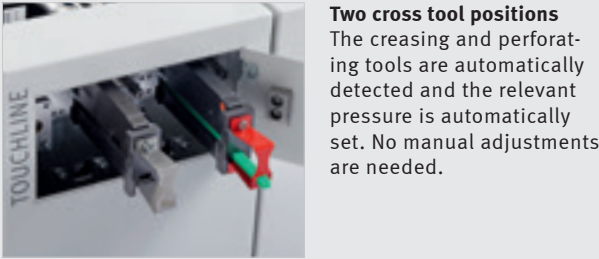
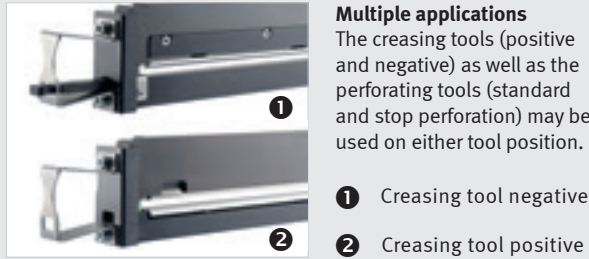
CP375 DUO (P/N 375.740)

TOUCHLINE CP375 DUO & TCF375

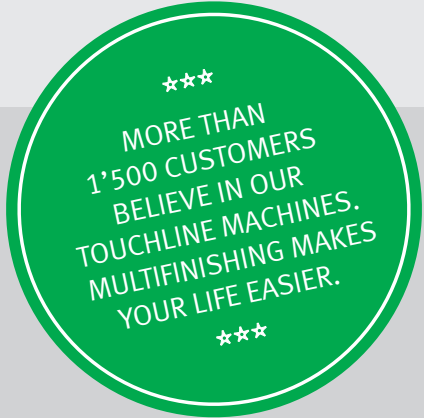
Technical Specifications Perforating, Creasing & Folding TOUCHLINE CP375 DUO & TCF375

Feeder system	suction feeder	Double sheet detection	ultrasonic
Feeder capacity	180 mm	Working system	Multigraf Quick-Set interchangeable tools
Sheet transfer device	vacuum belt	Deliveries	folding = shingling delivery creasing only = lower reception tray
Paper size minimum	105 x 148 mm	Speed	depending on job, up to 6'000
Paper size maximum	375 x 660 mm	Dimension	3'185 x 600 x 1'340 mm
	375 x 1'050 mm with table extension	Weight	338 kg
Paper stocks perforating	80-300 gsm or max. 0.3 mm*	Electrical connection	100-240 VAC, 50/60 Hz
Paper stocks creasing & folding	100-400 gsm or max. 0.4 mm*		
Control panel	touchscreen		

*Paper stocks depending on material quality.



THE NEW DIMENSION IN
PERFORATING, CREASING AND FOLDING
OVERVIEW TOUCHLINE FAMILY



multigraf

SWISS MADE
DESIGNED AND PRODUCED IN SWITZERLAND



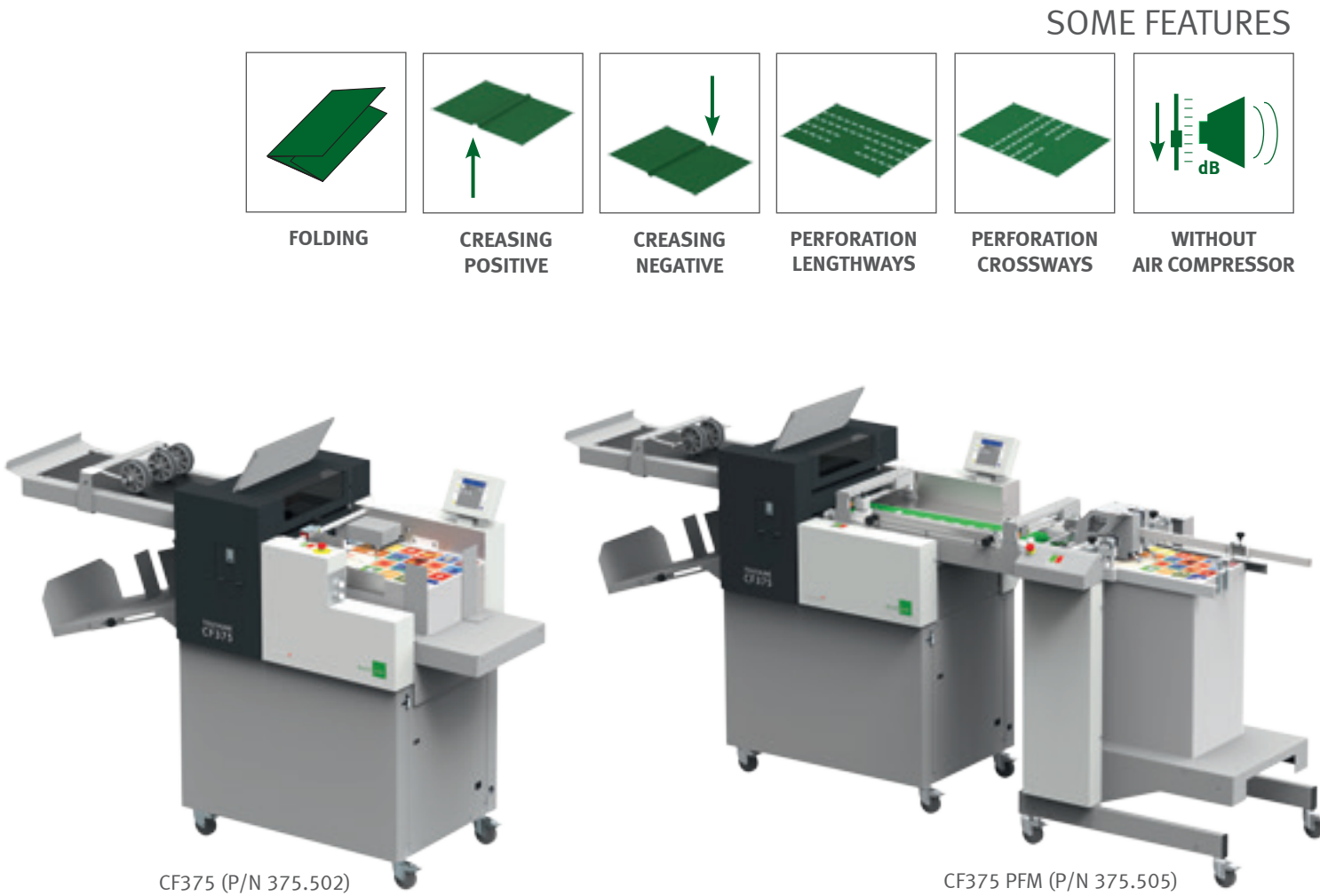
TCF375 (P/N 375.520)

Multigraf AG follows a policy of continuous improvement and reserves the right to modify the technical data provided in this document without prior notification. The production rates are based on optimum operating conditions and may fall depending on the usage and ambient conditions. Subject to technical modifications and errors.



Multigraf AG
Print Finishing Systems
Grindelstrasse 26
CH-5630 Muri (AG)
T +41 56 675 58 00
F +41 56 675 58 60
mail@multigraf.ch
www.multigraf.ch
www.youtube.com/eurofold

Ref: Gesamtbrospekt TL/ENV2/10.16



CF375 (P/N 375.502)



CF375 PFM (P/N 375.505)

Technical Specifications Creasing TOUCHLINE C375

Feeder system	suction feeder
Feeder capacity	180 mm
Paper size minimum	105 x 148 mm
Paper size maximum	375 x 660 mm
	375 x 1'050 mm with table extension
Paper stocks creasing	80-400 gsm or max. 0.4 mm*
Control panel	touchscreen

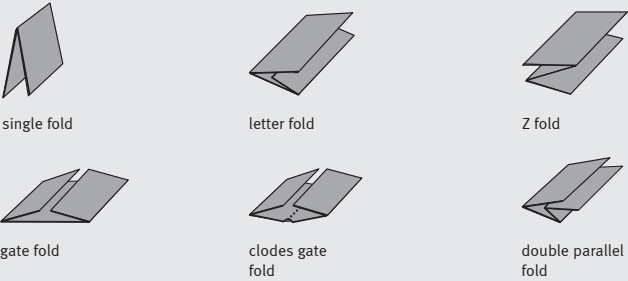
*Paper stocks depending on material quality.

Creasing Tool

Pressure adjustment	3 depths, automatically adjustable by touchscreen
Number of tools	1 creasing tool = 2 different styles more creasing tools optionally available
Number of operations	up to 20 per sheet
Minimum distance	1 mm
Perforation	no

Double sheet detection	ultrasonic
Creasing system	creasing bar
Reception tray height	120 mm
Speed	depending on job, up to 6'000
Dimension	1'700 x 600 x 1'200 mm
Weight	125 kg
Electrical connection	100-240 VAC, 50/60 Hz

Creasing patterns for the following fold types are included in the standard program:



Technical Specifications Creasing & Folding TOUCHLINE CF375

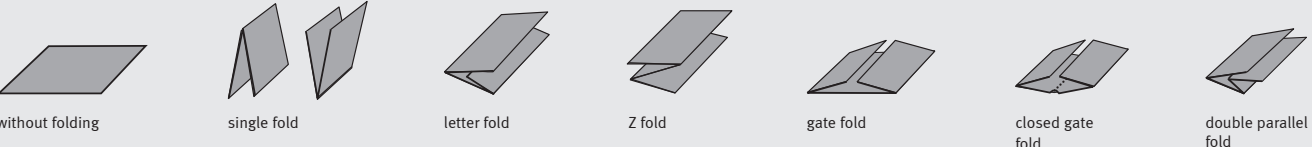
Feeder system	suction feeder
Feeder capacity	180 mm / 660 mm**
Paper size minimum	105 x 148 mm
Paper size maximum	375 x 660 mm
	375 x 1'050 mm with table extension
Paper stocks	100-400 gsm or max. 0.4 mm*
Control panel	touchscreen
Double sheet detection	ultrasonic
Creasing system	Multigraf Swingbar
Creasing styles	1 creasing bar = 2 styles
Crease depths	3 automatic setups
Number of creases	20

Minimum crease distance	30 mm
Fold system	Multigraf Pro-Knife
Number of folds	2
Fold length minimum	30 mm
Fold length maximum	500 mm
Delivery belt length	820 mm
Reception tray height	120 mm
Speed	depending on job, up to 6'000
Dimension	1'860 x 600 x 1'320 mm
	2'775 x 678 x 1'122 mm**
Weight	196 kg / 308 kg**
Electrical connection	100-240 VAC, 50/60 Hz

*Paper stocks depending on material quality.

**CF375 PFM (P/N 375.505)

TOUCHLINE CF375 supports the followng common fold types:



Touchscreen

Very simple and menu driven operation. All elementary settings are entered directly over the touchscreen.



One touch operation

A small, centralised and ergonomic operating panel offers all necessary functions for a fast production start.



Vacuum pile feeder

The pile feeder is using a vacuum belt technology and air knife control for a perfect sheet separation. It handles paper sizes from 105 x 148 mm to 375 x 1'050 mm.

Max Size	Min Size		Speed	Speed
375 x 1050mm	105 x 148mm	80-400 gsm	5000 A4/hour	6000 A5/hour



C375 (P/N 375.720)



Double sheet detection

A professional ultrasonic double sheet detection system which offers a 100% control of all sheets running through the machine.



Two delivery sections

The delivery side consists of two different output levels. For creasing and folding, the upper delivery belt is used. For creasing only the lower reception tray.



Perforating device

An online perforating device is available for the lower exit level as an option.

Max Size	Min Size				Speed	Speed
375 x 1050mm	105 x 148mm	100-400 gsm	2 Folds	Max Crosses 20	5000 A4/hour	6000 A5/hour



CF375 (P/N 375.502)

Technical Specifications Perforating & Creasing TOUCHLINE CP375 MONO

Feeder system	suction feeder
Feeder capacity	180 mm
Paper size minimum	105 x 148 mm
Paper size maximum	375 x 660 mm
	375 x 1'050 mm with table extension
Paper stocks perforating	80-300 gsm or max. 0.3 mm*
Paper stocks creasing	80-400 gsm or max. 0.4 mm*
Control panel	touchscreen
Double sheet detection	ultrasonic

*Paper stocks depending on material quality.

Working system	Multigraf Quick-Set interchangeable tools
Reception tray height	120 mm
Delivery belt	optional shingling delivery, L = 1'100 mm, P/N 482.112
Speed	depending on job, up to 6'000
Dimension	1'700 x 600 x 1'200 mm
Weight	128 kg
Electrical connection	100-240 VAC, 50/60 Hz



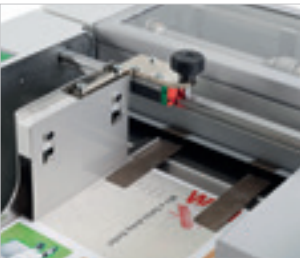
Perforating and creasing tools

The tools are automatically detected and the relevant pressure is automatically set. Additional tools may be stored in the especially designed parking slots.



Rotary tools

Up to four perforating heads are available: all of them plug and play. The setup will be done within just a few seconds on the touchscreen control panel.



Side guide system

The side guide unite features a very precise sheet infeed system: simple one hand operation, top guiding system for secure and straight infeed.

Max Size	Min Size				Speed	Speed
375 x 1050mm	105 x 148mm	80-400 gsm	Max Crosses 20		5000 A4/hour	6000 A5/hour



CP375 MONO (P/N 375.700)